

PUBLIC AUCTION



MUESER M-IV-5 Engine Lathe



CLAUSING METOSA C1440 Engine Lathe

Facility Closing

GENON CHALK POINT

25100 Chalk Point Road, Aquasco, MD 20608

WEBCAST AUCTION, NO ON-SITE BIDDING
WEDNESDAY, APRIL 6TH
STARTING AT 10AM ET

Inspection: Day Prior to Auction from 9AM - 4PM



BULLARD Dynatrol 36" Vertical Turret Lathe



BLANCHARD 20K-36 Vertical Turret Lathe



BORTECH Bridge Type Welding System



ATLANTIC 10' x 1/2" Hyd. Power Shear



STANDARD TOOL Walk-In Spray Booth



Coil Insulation Analyzer



PHENIX Motor Voltage Test Unit



DESHAZO Single Glider Bridge Crane, 10-ton & 5-ton



CNC LATHE

MORI SEIKI TI-5 CNC Lathe, Fanuc System
6T CNC Control, Chip Conveyor, Tailstock,
Turret Tool Holder, Huron Collet Chuck, Mist
Exhauster

TURRET LATHES

BULLARD Dynatrol 36" Vertical Turret Lathe, (4)
Chuck Vises, Sony 2-Axis DRO

BLANCHARD 20K-36 Vertical Turret Lathe 36"

PMC Table, Neutrofier PMC Control, Coolant

1975 CM 63" Vertical Turret Lathe, 5-Station
Turret Head, Anilam Miniwizard 2-Axis DRO,
S/N MN-742612, Front Man Platform

LATHES

LEBLOND REGAL 24" Engine Lathe, Raised 165"
Gap Bed, 21" 4-Jaw Chuck, Tailstock, (2) Steady
Rests, Tool Post, Cross Slide, 5" Bar Through

Spindle

SM Engine Lathe, 144" Bed, 12" 3-Jaw Chuck,
Acu-Rite 2-Axis DRO, Tailstock, (2) Steady Rests,
Cross Slide, Tool Post, 3" Bar Through Spindle,
40-1600 Spindle RPM

MUESER M-IV-5 Engine Lathe, 116" Gap Bed,
39-1/2" 4-Jaw Chuck, Acu-Rite DRO, S/N
44909, 3-5/8" Bar Through Spindle, Tailstock,
(2) Steady Rests, Cross Slide, Tool Post, Spare
19-1/2" 3-Jaw Chuck

CLAUSING METOSA CI440 Engine Lathe,
Acu-Rite 2-Axis DRO, 48" Bed, 8" 3-Jaw Chuck,
Tailstock, Cross Slide, Tool Post, Coolant
System, 1-5/8" Bar Through Spindle, Lighted
Backsplash

BOLTON Tool Bench Lathe, 34" Bed, Tailstock,

Cross Slide, Tool Post, Gap Bed, Back Splash

CLAUSING COLCHESTER 15" Lathe, 69" Bed,
8" 3-Jaw Chuck, Tailstock, Cross Slide, Tool
Post, Steady Rest, Acu-Rite 2-Axis DRO, 2" Bar
Through Spindle, Gap Bed, Chip Pan



FABRICATING

KOIKE ARONSON IK-1500C Plasma Cutting Table, Coordinated Drive Tracing System, Thermal Dynamics Professional Plasma Power Source, 107" x 58-1/2" Table
1987 ATLANTIC 10' x 1 1/2" Hyd. Power Shear, Model HDE, 30-HP, (4) Feed Extension Legs, Footswitch, Backgauge
CHICAGO 48" Box/Pan Manual Finger Brake

PIRANHA P50 Hyd. Ironworker, 50-Ton Punch, Shear & Coper/Notcher, Footswitch
ROPER WHITNEY PEXTO Pinch Roller, 16-18 Soft Steel Capacity
Custom 5-3/4" Bench Top Pinch Roller
TAURING Angle Roll Machine, Footswitch-Palm Operating Stand
BPR EAGLE Angle Roll Machine, Dual Footswitch
METAL PRO MP9000 Hyd. Bender, Assorted

Sheeves, Center Ram
Triangle Electric Bender, Model WTB-HRA
THERMAL DYNAMICS Cutmaster 81 Plasma Cutter
BORTECH Bridge Type Welding System, 25" Power Rotary Chuck on Track System, Bortech 306 Variable Speed Control
LINCOLN Idealarc R3R-500 Arc Welder on Bottle Cart
(2) MILLER Syncrowave 350 LX Welder on Cart

(2) LINCOLN Invertec V350-Pro Welder w/LN-25 Pro Wire Feeder
LINCOLN Idealarc TIG-300/300 Arc Welder on Bernard Cart w/Miller Coolmate Cooler
(3) Dual Bottle Acetylene Torch Cart w/Twin Line Hose & Torch Head
(2) 194" x 48" x 1" Steel Welding Tables
6' x 5' Acorn Welding Table



WEBCAST AUCTION - NO ON-SITE BIDDING



LAB & INSPECTION

AMERICAN AC/DC High Voltage Test System,
Model MTS 750-SCR-100D-84-601
EDDYTHERM 4X Plate Heater, Swivel Cross Bar
PHENIX Motor Voltage Test Unit on Caster Cart
PHENIX Motor Core Loss Test System
Coil Insulation Analyzer, Model 6925C w/3-
Phase 13k V Transfer Switch
SCIENTEMP Cold Oven
DILLON 20,000-lb. Dynamometer
AEMC Micro-Ohmmeter
15 KV DC Dielectric Tester
Pressure Test System on Cart
BUEHLER Micromet II Micro Hardness Tester
ROCKWELL Macromet 1 Hardness Tester

ZEISS ICM 405 Microscope w/Paxcam
ZEISS Stemi SR Microscope
ZEISS Axioskop Microscope
Large Selection of Late Model Electrical
Analyzers & Test Equipment
Quantity of Electric Testers, Gauges & Power
Supply Equipment Huge Selection of
Precision Inspection Equipment - **STARRETT**
OD Micrometer Sets in Cases, ID Micrometers
& Sets, Thread Mics, Center Mics, Parallel
Sets, Dial Indicators, Depth Mics, Levels,
Radius Gages, Pin & Square Gage Sets, Digital
Calipers up to 36", Precision Straight Edge Kit,
MIKEMASTER Height Gages, Saddle V-Blocks
& Much More





MILLS

VECTRA CL Series CNC Vertical Mill, Fagor CNC Control, 48" x 9" Power Table, Knee Bed, Quill Feed
BRIDGEPORT 2-HP Mill, 42" x 9" Table, Sony 2-Axis DRO, Knee Bed
MASTER MACHINE Horizontal Mill, Model PM5-96 MPM, 96" x 48" Block Feed Table, Newall DP700 DRO 3-Axis Control
BRIDGEPORT Vertical Mill, Sony 2-Axis DRO, 42" x 9" Servo Table, Automatic Power Draw Bar, 2-HP, Kurt 6" Precision Machine Vise, Knee Bed
BRIDGEPORT Series II Vertical Mill, 2-Axis DRO, 58" x 11" Table, Knee Bed, 50-3,500 Spindle RPM, Kurt 6" Precision Machine Vise
1982 MILWAUKEE KEARNEY & TRACKER Horizontal Mill, Model 310 S-15, 68" x 15" Table, Knee Bed

TOOLROOM

LANDIS Centrifugal OD Grinder, 5-HP, Spindle Head, Tailstock, (3) Quarter Rests
BROWN & SHARPE 1030 Micromaster Hand Feed Surface Grinder, 30" x 10" Hitachi PMC BICKFORD Chip Master Radial Arm Drill, 15" Column, 7" Arm, 42" x 80" Bed
AMERICAN Hole Wizard 13" Radial Arm Drill, 13" Column, 5" Arm, 30-1/2" x 56" Bed
POWER TEAM 100-Ton H-Frame Hyd. Press, 50" Window, Adj. Bed Height
D.C. MORRISON Key Seater, 24" x 27" Table, S/N K834095
ORBIT 16 Speed Industrial Drill Press, 11" Dia. Table
JET Step Pulley Drill Press, 16" x 13-1/2" Table
JET Bench-Top Drill Press
OLIVER ADRIAN Drill Pointer
ZENMAR Vertical Mini Band Saw
(2) MILWAUKEE Magnetic Base Drills

ROTABEST Micro 32/50 Magnetic Base Drill in Case
MAGNATECH Evolution ME5000 Magnetic Base Drill in Case
BURR KING 4" Vertical Belt Sander
BALDOR 8" Double End Pedestal Grinder, 3-HP
BALDOR Double End Pedestal Tool Grinder
BALDOR Double End Pedestal Grinder
RIDGID 300 Power Pipe Threader
BUEHLER/METASERV Pneumat II Mounting Press w/Mold/Heater Unit
DAKE Wheel Press
Portable Hyd. Wheel Press
(2) BUEHLER Ecomet V Grinder/Polishers
BUEHLER Polimet I Twin Station Polisher Table, Center Sink
STUERS Discotom-2 Pass Through Grinder
MORI SEIKI CNC Lathe (Out Of Service)
DUMONT 3R Arbor Press, 11" Throat
Large Arbor Press, 11" Throat
Downdraft Sanding Table, 40-3/4" x 33" Table

UNIVERSAL 12" Rotary Dividing Table
(2) 48" x 48" x 35" Machine Block Table
(2) CHALLENGE 36" x 72" x 6" T-Slotted Machine Table on HD Stand
(2) 32" x 24" x 14" Contour Machine Block Tables
8' x 4' x 4-1/2" Steel Lay Out Block Table
STRESS-RITE Slotted Base Plate, 20' x 14' Large Machine Slotted Floor Base
(2) RIDGID 141 Jam Proof Head Attachment
(5) 3-Jaw Precision Chucks up to 10" & Lathe Steady Rests
Taper Tool Holders w/Tooling & Assorted Collets - R-5, Spring Collets, Face Mills
(3) 12" x 12" x 24" 4-Way Machine Angle Blocks
Large Selection of Assorted Machine & Angle Blocks
Chuck Plates up to 76" Dia. on Rack
(4) 12" x 36" x 24" 4-Way Machine Blocks
Large Selection of Holddowns & Accessories on Metal Shelves

WEDNESDAY, APRIL 6TH STARTING AT 10AM ET



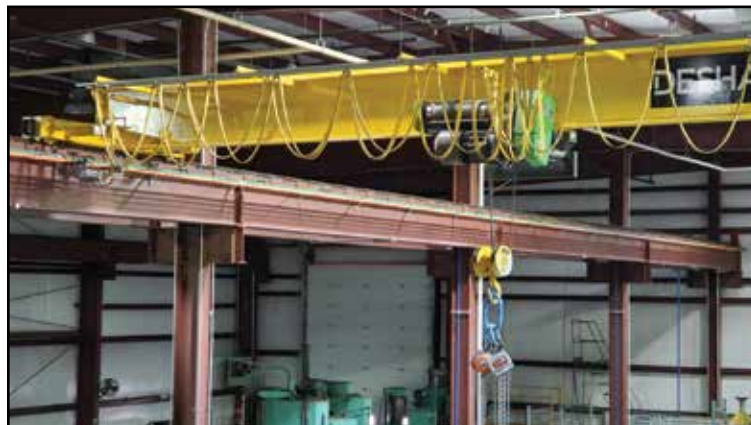
PAINT BOOTH & OVEN

BAYCO Drive-In Outdoor Oven
BAYCO Walk-In Dry Bake Oven, Part Flow Indicator Chart
STANDARD Tool Walk-In Spray Booth, Lights, Fan, 10' Opening, Service Door, 13' x 153" OD
1-Gallon Paint Shaker

MATERIAL HANDLING

DESHAZO 10-Ton x 44' Single Girder Bridge Crane w/Electric Cable Hoist, Pendant Controls, Top Riding
DESHAZO 5-Ton x 44' Single Girder Bridge Crane w/(2) Stahl Electric Cable Hoists, Pendant Controls, Top Riding
3-Ton Rolling Gantry Crane w/2-Ton Chain Fall

& Trolley, 163" Window
Over 400' of Electrical Crane Rails in Both Bays
(3) CONEX 20' x 8' Box Storage Containers
ENPAC Poly-Stacker Drum Storage System
Forklift Booms & Spreader Bars
Hydraulic Pallet Jacks
ENERPAC 10-Ton Hydraulic Jacks
Steel Jacks & Roller Stands
(5+) **WESCO** Die Lift Carts
Self-Dumping Trash Hoppers
Rolling Scaffolding
Shim Sets, Nylon Slings, Shop Parts & More on Metal Shelving
Selection of Rigging Equipment - HD Portable
Steel Rigging Rack w/Clevises, Shackles, Swivel, Leg Lifting Cable, Slings, Rope & More Chain Ratchets



ALWAYS AVAILABLE TO HELP WITH YOUR AUCTION.

PRIOR TO THE SALE DATE, REGISTER AT
BidSpotter.com

SCAN HERE TO SEE MORE



Myron Bowling



Joe Oliver
513/604-4958
Joe@MyronBowling.com



Kevin Gamm
513/235-6430
Kevin@MyronBowling.com



Greg Hengehold
513/520-7636
Greg@MyronBowling.com



Christopher Lee
513/720-1687
Christopher@MyronBowling.com



Tom Bowling
513/738-3311
Tom@MyronBowling.com

COMPLETE TERMS & CONDITIONS can be found at MyronBowling.com, or call 513-738-3311 if you have questions. Buyer's Premium 18% ONLINE w/BidSpotter.com.

REMOVAL & PAYMENT: Machinery removal is the responsibility of the buyer. All equipment must be removed in accordance with the specific auction timeline and terms of sale. See the specific auction web page for details

Additional terms may be announced during the auction. We make every effort to accurately describe each item in the auction; however, a mistake may occur. Buyers must take responsibility to thoroughly inspect the items on which they intend to bid. Each item will be sold "As is, where is." There is absolutely no warranty or guarantee of any kind either written or implied. Occasionally, additional information may come to light regarding any and all items being sold during the auction. When this occurs the new information takes precedence.



P.O. Box 369 | Ross, Ohio 45061
Phone: 513/738-3311 | Fax: 513/738-0221
www.MyronBowling.com

